



THE *Merisear*

EXTERIOR

- French country manor exterior
- Natural stone walls and patios
- Custom 8' arched Mahogany front door
- Garage entries with stone soldiers and custom carriage doors
- Large beautiful flagstone patio
- Flagstone sidewalk
- Custom made shutters and window boxes
- Covered front entry
- Garage - 3 car, 750 sq. ft.

INTERIOR

6,055 Total square feet of living space

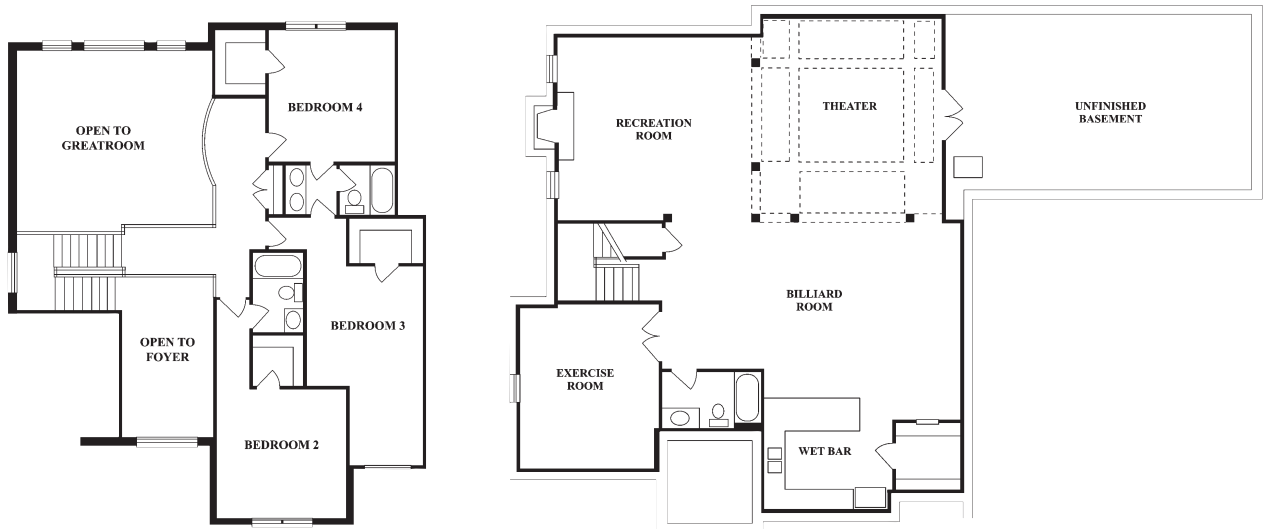
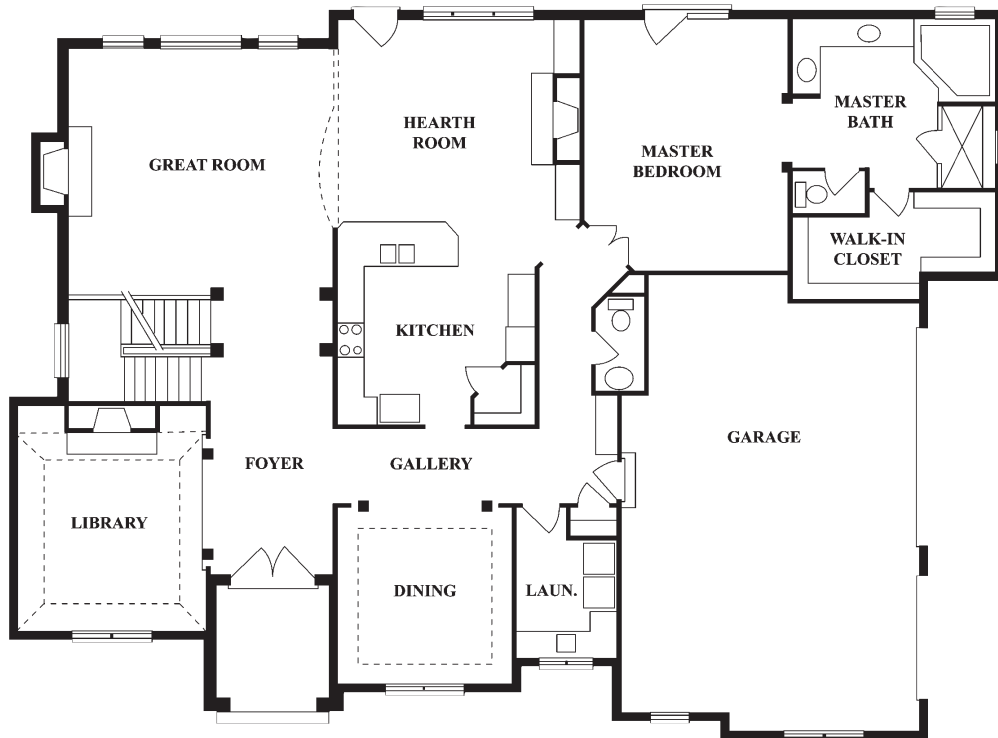
- First floor - 2,675 sq. ft.
- Second floor - 1250 sq. ft.
- Finished lower level - 2130 sq. ft.
- Four bedrooms, 4 full baths and one half bath
- Five Fireplaces, 4 gas, 1 wood burning

TECHNICAL

- Security system
- Video surveillance
- Whole house sound
- Complete wiring for cable, phones, and high speed data

For information, contact ***Karen Weber-Meinberg:***
513-470-6200 | kmeinberg@sibcycline.com | sibcycline.com/kmeinberg

THE *Merisear*



This brochure is for illustration purposes only and not part of a legal contract. All information herein is believed to be accurate, but not guaranteed and subject to change.